

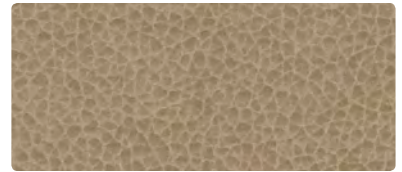
FAUX LEATHER COORDINATES



BOLERO
BO-007 Doe



CARESSA
CA-027 Buff



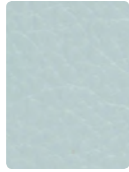
PALERMO
PL-027 Buff



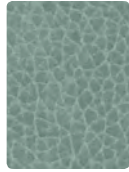
BOLERO
BO-002 Jonquil



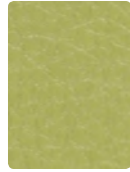
BOLERO
BO-012 Butterscotch



CARESSA
CA-074 Spa



PALERMO
PL-014 Aqua



CARESSA
CA-083 Wasabi



PALERMO
PL-017 Ivory



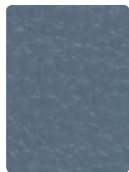
PALERMO
PL-026 Dove



PALERMO
PL-002 Butter



PALERMO
PL-011 Poppy



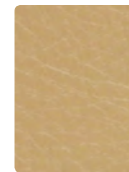
CARESSA
CA-064 Cerulean



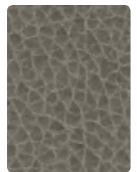
BOLERO
BO-023 Aqua



CARESSA
CA-073 Basil



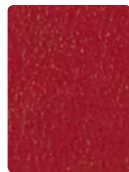
CARESSA
CA-067 Ecrú



PALERMO
PL-016 Storm



CARESSA
CA-029 Ochre



BOLERO
BO-011 Lipstick



BOLERO
BO-014 Cerulean



CARESSA
CA-084 Aqua



BOLERO
BO-013 Lime



BOLERO
BO-030 Mojave



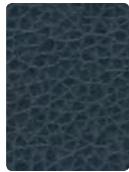
BOLERO
BO-026 Cliff



PALERMO
PL-009 Mango



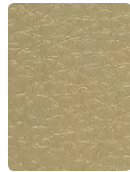
BOLERO
BO-001 Paprika



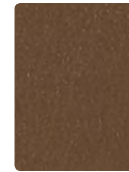
PALERMO
PL-004 Sapphire



CARESSA
CA-093 Bluegrass



CARESSA
CA-063 Willow



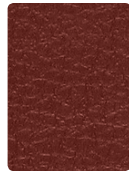
BOLERO
BO-020 Toast



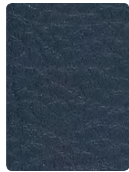
CARESSA
CA-026 Granite



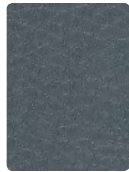
BOLERO
BO-009 Terra Cotta



CARESSA
CA-001 Ruby



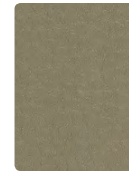
CARESSA
CA-024 Iris



CARESSA
CA-044 Cadet



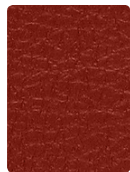
PALERMO
PL-019 Tawny



CARESSA
CA-046 Stone



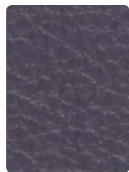
PALERMO
PL-006 Ebony



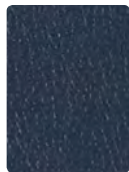
CARESSA
CA-021 Red Pepper



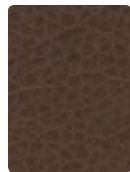
BOLERO
BO-005 Orchid



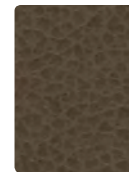
CARESSA
CA-015 Lavender



BOLERO
BO-004 Regatta



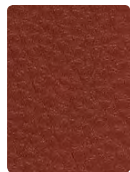
PALERMO
PL-010 Saddle



PALERMO
PL-000 Java



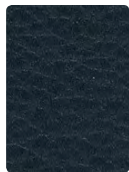
BOLERO
BO-016 Charcoal



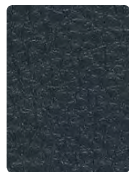
CARESSA
CA-031 Brick



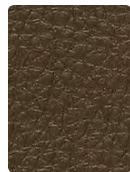
CARESSA
CA-005 Aubergine



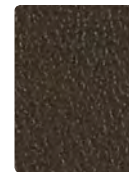
CARESSA
CA-004 Navy



CARESSA
CA-014 Admiral



CARESSA
CA-040 Java



BOLERO
BO-000 Espresso



CARESSA
CA-006 Black

TECHNICAL INFORMATION

Bolero, Caressa, Palermo

Pattern 54"	Content and Backing	Certifications	Weight/ Linear Yd	Pattern Repeat	Finish	Abrasion* Wyzenbeek	Light-Fastness*	Flammability*	Cleaning Code	Grade#
BOLERO	62% Polyurethane face - PVC FREE, 38% Polyester backing	GREENGUARD	20 oz.	None	WRITE AWAY - Soil and Stain Resistant Top Coat with Ink Resistant Technology	250,000 [^] Double Rubs	200 hours	Cal. 117-2013 NFPA 260 (Equiv. to UFAC) ASTM E84 Class 1 or A FMVSS 302 IMO A.652(16) 8.2 IMO FTP 2010 Part 8, 3.1	WS, BC	P
CARESSA	80% Vinyl face, 20% Polyester backing Backing: 100% Polyester	GREENGUARD	29 oz.	None	Soil and Stain Resistant Top Coat with Ink Resistant Technology	650,000 [^] Double Rubs	1000 hours	Cal. 117-2013 NFPA 260 (Equiv. to UFAC) ASTM E84 Class 1 or A Boston Fire Dept (BFD IX-1) FMVSS 302 IMO A.652(16) 8.2 & 8.3 NY & NJ Port Authority	WS, BC	O
PALERMO	62% Polyurethane face - PVC FREE, 38% Polyester backing	GREENGUARD	20 oz.	Non-Matching	WRITE AWAY - Soil and Stain Resistant Top Coat with Ink Resistant Technology	250,000 [^] Double Rubs	200 hours	Cal. 117-2013 NFPA 260 (Equiv. to UFAC) ASTM E84 Class 1 or A FMVSS 302 IMO A.652(16) 8.2 IMO FTP 2010 Part 8, 3.1	WS, BC	P

REDUCED ENVIRONMENTAL IMPACT

GREENGUARD Certified products are tested for low chemical emissions to standard UL 2818. For more information, visit UL.com/gg.

Bolero, Palermo

PVC FREE Lead Free Phthalate Free Heavy Metal Free Formaldehyde Free Low VOC BPA Free Non-Toxic
99%+ of all Water and Raw Materials used in production are reclaimed and recycled Energy and Water Efficient Production

Caressa

Tris Free Phthalates DNHP, BBP, and DEP Free

CLEANING INFORMATION

WS: Water/Solvent Cleaner – Spot clean with a mild solvent, an upholstery shampoo, or the foam from a mild detergent. When using a solvent or dry cleaning product, follow instructions carefully and clean only in a well-ventilated room. Avoid any product that contains carbon tetrachloride or other toxic materials. With either method, pretest a small area before proceeding. Always rinse promptly with clean water.

BC: Bleach Cleanable – 1 part bleach, 9 parts water = 10% bleach, 90% water solution. Do not clean/disinfect fabric for longer than 10 minutes using the 10% bleach solution. Always rinse promptly with clean water after applying the bleach solution. Failure to do so will void any and all warranties.

Bolero, Palermo

Prompt cleaning is always recommended. Recommended cleaning steps are listed by type of stain.

Regular Cleaning and Maintenance (Dirt, Grime): Clean the soiled area with mild soap and water, then rinse with fresh water and wipe dry with a clean cloth.

Food Stains/Oils (Mustard, Ketchup, Chocolate, Coffee/Tea, Salad Dressing): Wipe the affected area with a soft cloth with appropriate pressure. If some stain persists, clean with mild soap and water. Rinse with fresh water and wipe dry. For stubborn stains spot clean with a 70% dilution of isopropyl alcohol and water and wipe. Rinse with fresh water and wipe dry.

Healthcare/Disinfection (Blood, Urine, Betadine): Wipe the affected area with a soft cloth with appropriate pressure. If some stain persists, spray it with a 70% dilution of isopropyl alcohol and water and wipe. Rinse with fresh water and wipe dry. **Disinfection:** This material withstands a 20% solution of household bleach and water. It is important to rinse the clean area with fresh water after applying the bleach solution.

Ink Marks/Graffiti (Ball Point Pen, Permanent Marker): Rub the affected area with a dry soft cloth with firm pressure. If some stain is still present spray it with a 70% dilution of isopropyl alcohol and water and wipe. Rinse with fresh water and wipe dry. Note: Removal of ink, particularly permanent marker, may vary depending on the period of time that the ink sets in. While this material offers excellent protection, full removal is not guaranteed.

Denim Dye Transfer (Blue Jeans): This material is designed to withstand the transfer of most types of indigo dye. In the case that faint dye transfer is visible, this can typically be removed with a 70% dilution of isopropyl alcohol and water. Note: Removal of indigo dye, particularly from wet jeans, may vary depending on the type of denim. While this material offers excellent protection, full removal is not guaranteed.

NOTE: The information in this cleaning guide refers to performance in specific tests conducted under laboratory conditions. This information is not a guarantee that every stain will be removed completely and some residual ghosting may be present after all the cleaning steps are followed.

Results may vary under actual conditions.

This information is not a guarantee and does not relieve the user from the responsibility of the proper and safe use of the product and all cleaning agents. The use of certain agents can be harmful to the surface appearance and lifespan of polyurethane. Mayer Fabrics, its agents, and assigns assume no responsibility resulting from the use of such cleaning agents to the polyurethane surface. Please check compatibility when using this product in combination with painted or varnished surfaces.

For additional cleaning information, please refer to the Mayer Fabrics website.

ADDITIONAL INFORMATION

Cal TB 133: All patterns may comply with California Technical Bulletin 133 when combined with appropriate components.

^Abrasion: Multiple factors affect fabric durability and appearance retention, including end-user application and proper maintenance. Wyzenbeek results above 100,000 double rubs have not been shown to be a reliable indicator of increased fabric lifespan.

Custom Capabilities: All patterns can be custom colored. Minimum yardage applies.

Digital Swatch Card Color Matching: Due to color variations on different monitors and color printers, actual swatch colors may vary slightly. Please request a memo sample from Mayer Fabrics to ensure proper color representation.

Specifications: Specifications are correct at the time of printing. Current detailed specifications are available on our website.

*Fabric grades are subject to change at any time. Please contact Integra Customer Service at 800.235.0234 x 4 or www.integraseating.com/resources/fabrics to confirm fabric grade.

 These fabrics meet or exceed these ACT performance guidelines. *Certification Marks owned by ACT*

Integra[®]

